

**SAP E & C MULTI VARIABLE LEVEL CONTROL TRAINER
(PRODUCT CODE: PCST -02A)**



Technical Specification: -

No.	Item Name	Technical Specifications
1	SCADA Application	Type: Runtime Make: Labview/Elipse/Eqvt.
2	DAQ Device	Make: NI USB-6001/Eqvt. Analog input 4, Analog output 2, Digital input-2 , Digital output -2
3	Level Transmitter	05 Nos., Type Electronic, Two wire, Range 0-250mm, Output 4-20mA
4	Dosing Pump	02 Nos., Positive displacement dosing pump with adjustable stroke, Supply : 230VAC, 10LPH I/P Signal: 4-20 mA DC
5	Process tank	05 Nos., Transparent, Acrylic with 0-100% graduated scale Height: 300 mm, Diameter: 150 mm, Thickness: 3 mm
6	Supply Tank	Material: SS303, Dimension: 46cm x 30cm x 30cm
7	Signal Isolator	a) Current to Voltage Converters - 5 Nos. 230V AC, I/P: 4 to 20 mA, O/P: 0 to 10 V b) Voltage to Current - 2 Nos. 230V AC, I/P: 0 to 10 V, O/P: 4 to 20 mA

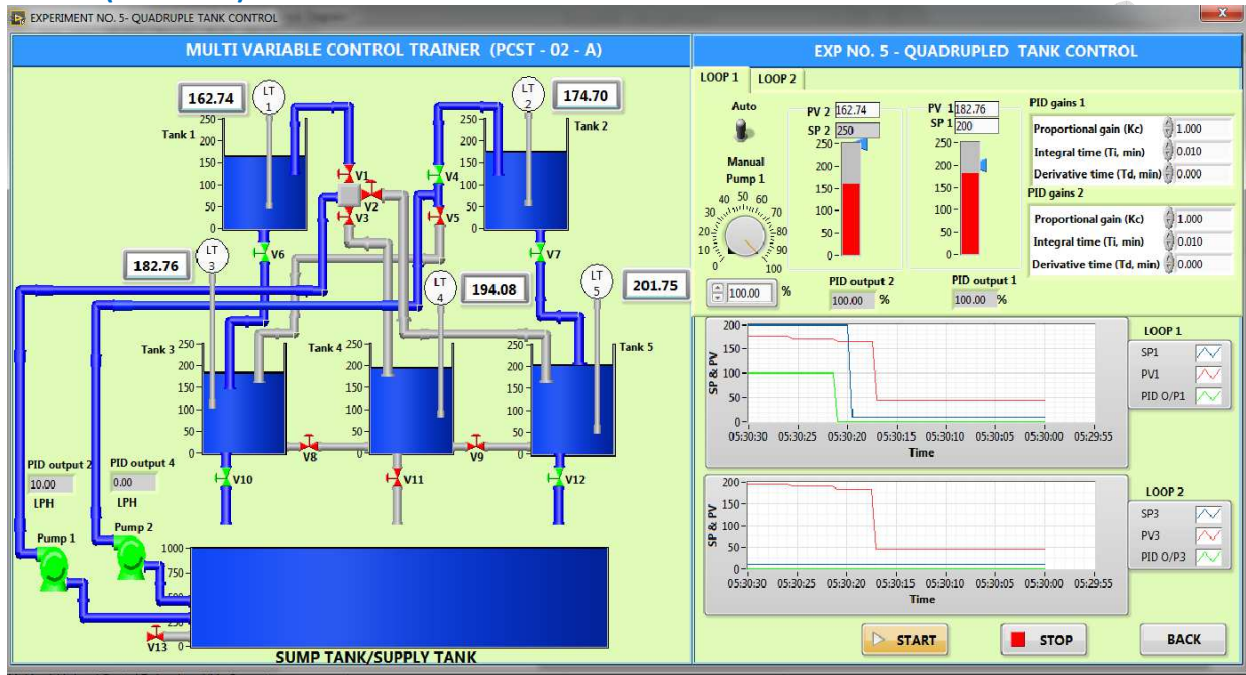
SAP E & C MULTI VARIABLE LEVEL CONTROL TRAINER (PRODUCT CODE: PCST -02A)



Range of Experiments:

- Study of level control Open loop, On-Off, P, PI, PD, PID Tuning by open & closed loop Stability analysis
- Study of second order interacting
- Study of second order Non interacting
- Study of cascade control
- Study of quadruple tank control

SCADA (LABVIEW) Screen:



Features:

- Computerized operation
- Closed loop water circulation
- Compact, self-contained
- Non-corrosive wetted parts
- Instruction & operation manual – soft copy as well as hard copy

Services Required:

- ❖ Electric supply: 1 ϕ 230 V AC, 50 Hz.

Note: All descriptive matter and illustrations are intended to give only a general idea of the equipment. Detailed specifications may be altered at the company's discretion without any notice.

Manufactured/Marketed By
SAP ENGINEERS & CONSULTANTS

Regd. Off. : Shop No. 26-27, 'Srushti', Survey No.82, Near Guru Ganesh Nagar,
Eklavya College Road (D.P.Road), Kothrud, Pune - 411 038, India

Telephone : (020) 2538 4737

Mobile : +91 94220 88946, +91 9552475082

Fax : (020) 2538 3544

Email : sales@sapengineers.com

Website : www.sapengineers.com / www.sapengineers.co.in

